

Barbados Physical Development Plan Amendment

Towards a Green, Prosperous and Resilient Nation

Six Cross Roads Community Meeting

February 25, 2017



**URBAN
STRATEGIES
INC**



ASH Prudentia
Dr. Christina Cameron
Environmental Planning Group
Sir Frank Alleyne
Dr. Frederick H. Smith

Sir Henry Fraser
Hydroterra Inc.
Dr. Karl Watson
Mr. Leslie Walling
Mr. Lionel Nurse

Mr. Luther Bourne
Dr. Malcolm Hendry
Dr. Marcia Burrowes
Richard Gill Associates
Savanta

Photo Credit: David Lewis

Overview

1. The Process

Who has been involved and what is the process?

2. The Opportunity

How can the PDP Amendment support a green, prosperous and resilient nation?

3. The Imperative

What have we discovered through our due diligence process?

4. Draft PDP Amendment: Key Directions

What are the key directions in the national plan?

5. Six Cross Roads Community Plan

How are the national policies applied to Six Cross Roads?

6. The Draft Review Process

How will the community be engaged in the process?

Team



Subject matter experts:

Environment

Climate Change

Coastal
Management

Natural Resources

Agriculture

Green Economy

Tourism

Built Heritage

Archaeology

Infrastructure

Transportation

The Process

CONSULTING TEAM

PHASE 1

Inception
Meeting & Initial
Work Plan

PHASE 2

Analysis &
Assessment

PHASE 3

Testing Policy
Areas for
Amendment

PHASE 4

Draft Plan Preparation

Launch and Stakeholder
Consultation

6 Community Meetings

PHASE 5

Finalising the
Plan
Amendment

Minister
accepts
Draft Plan



GOVERNMENT OF BARBADOS

Formal
Commenting
Process

Plan
Approval

The Opportunity

An aerial photograph of a coastal city, likely in the Caribbean, showing a dense urban area with a mix of residential and commercial buildings. The city is situated along a coastline with a harbor area visible in the lower left. The background shows rolling green hills under a blue sky with scattered clouds.

An island of tremendous core assets and increasing levels of vulnerability

New key initiatives and international commitments

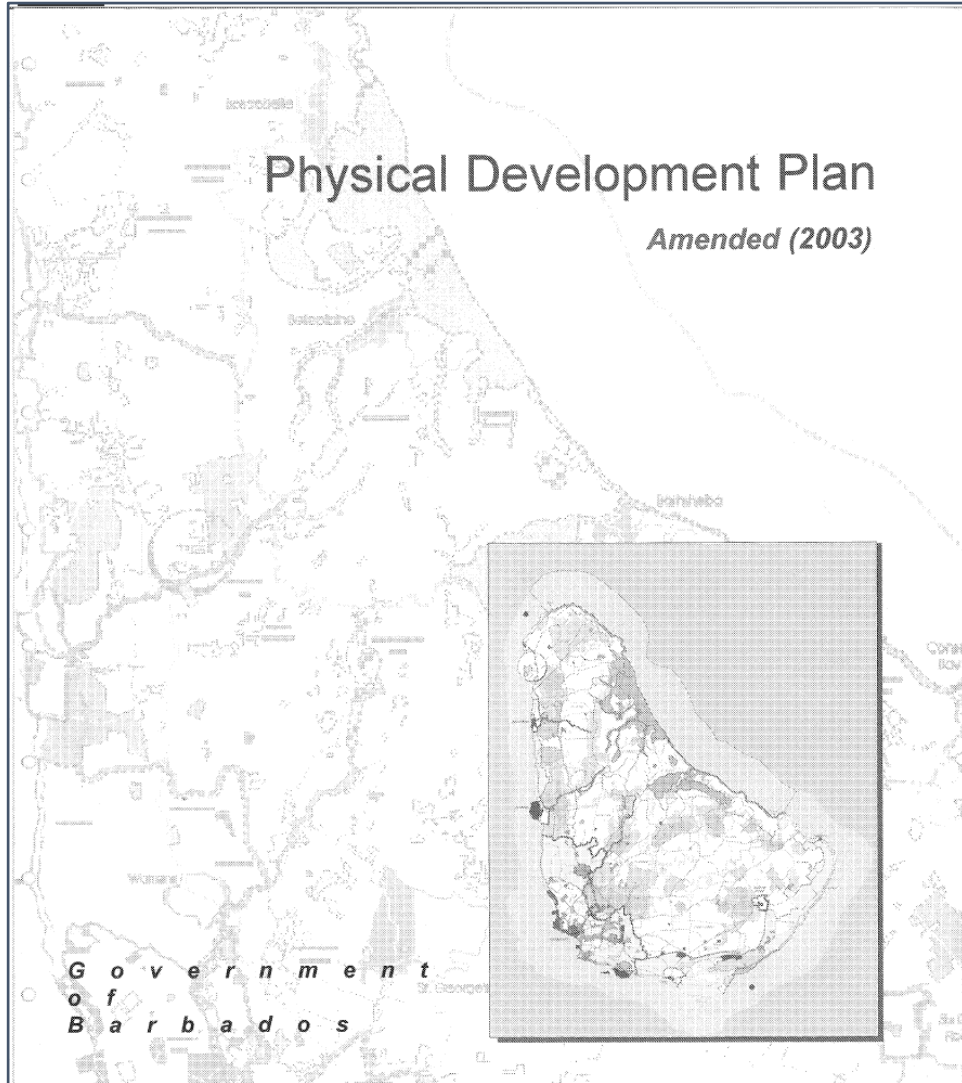
Significant changes to the pattern, density and nature of development

Recognizing this is an island of scarcity: food, water and land

An opportunity to set in place transformational and foundational change

Towards a Green, Prosperous and Resilient Nation

Amending the PDP (2003)



Growth Management and Agricultural Preservation

Housing

Heritage

Environment

Infrastructure

Land Use

Parks and Open Space

Community Plans

National Park Plan

What has changed since 2003?

- **UNESCO World Heritage** Designation: Historic Bridgetown and its Garrison
- Government **commitment to sustainability** – Habitat III and the Emerging Sustainable Cities Initiative
- Focus on **climate change and resiliency** with new international commitments – COP 21 Paris Agreement; Habitat III
- Prioritisation of the **green economy** – Green Economy Scoping Study

- Ongoing and successful implementation of the **National Park Plan**
- Commitment to **renewable energy** initiatives: 30% renewable energy by 2029
- Rising concern about **chronic non-communicable diseases**
- **Steady state growth** with an aging population
- New CZMU data

An aerial photograph showing a coastal town with numerous houses and buildings, surrounded by large agricultural fields. The ocean is visible in the background. The text "THE IMPERATIVE" is overlaid in large, white, bold, sans-serif capital letters across the center of the image.

THE IMPERATIVE

Plan Imperative

| Growth in developed area outpacing population growth

No new land
needed to
accommodate
growth in people
and jobs

Promoting Sustainable Development

**Critical need to
increase access to
local and healthy food
and promote a viable
agriculture sector**

Promoting Food Security and Sovereignty

Plan Imperative | Eroding Environment and Climate Change

**Need for resiliency
and climate change
adaptation to be a
critical and cross-
sectoral lens**

**Protecting Natural Heritage Systems and
Introducing Disaster Risk Reduction**

**Stressed
transportation
network**

Advancing Mobility and Accessibility

Plan Imperative | Rethinking economic drivers

**Need to protect
and leverage
Core Assets**

Greening the Economy

Plan Imperative | Infrastructure Challenges



Infrastructure
deficits and
dependency

Increased Sustainability of National Infrastructure

KEY DIRECTIONS



Vision, Principles, Key Directions

Vision

The Physical Development Plan seeks to achieve a vision for Barbados over the next 10 years as:

- A nation of healthy, safe, distinct and age- and gender-responsive communities sharing a common economic base and community aspiration.
- A nation in which sustainable economic and physical growth are balanced with conservation and restoration of irreplaceable resources, rural working landscapes, cultural heritage and natural heritage.
- A nation which fosters a green economy focused on strategies to enhance resource efficiency and economic growth, in particular in the sectors of agriculture, fisheries, housing, transportation, renewable energy and tourism.
- A nation characterized by increasing social equity enabling meaningful participation in social and economic activities for all.
- A nation which is resilient and prepared for the impacts of climate change.

Vision, Principles, Key Directions

Principles

The following principles underlie the policies of this Plan:

- The efficient use of land, resources and finances of the nation.
- The adoption of adaptive planning approaches in all aspects of national and sectoral planning for the consideration of climate variability and climate change impacts.
- The promotion of social equity, health and safety for all residents.
- The conservation, protection and restoration of irreplaceable core assets and man-made resources.
- The development of safe, vibrant places for people to live, work and play.
- The management of growth so that it occurs in a safe, logical and orderly fashion ensuring protection of core assets, reduction of environmental risks and ecological scarcities, promotion of sustainable development and efficiency in delivery of infrastructure.

Vision, Principles, Key Directions

2.1 Promoting Sustainable Development



2.2 Protecting Core Assets



2.2.1 Food & Agriculture



2.2.2 Natural Heritage System



2.2.3 Water



2.2.4 National Park



2.2.5 Cultural Heritage



2.2.6 Community Core

2.3 Greening the Economy



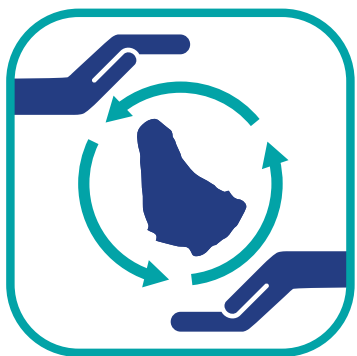
2.4 Advancing Mobility and Accessibility



2.5 Planning for National Infrastructure



Towards a Green, Prosperous and Resilient Nation



Planning for Sustainable Development

Island Settlement Structure

- Defines 3 structural components to manage growth and direct investment at appropriate scales:
 - Centres
 - Nodes
 - Corridors
- Encourages the integration of land use and mobility
- Promotes appropriate levels of service and efficiency of infrastructure to support complete communities

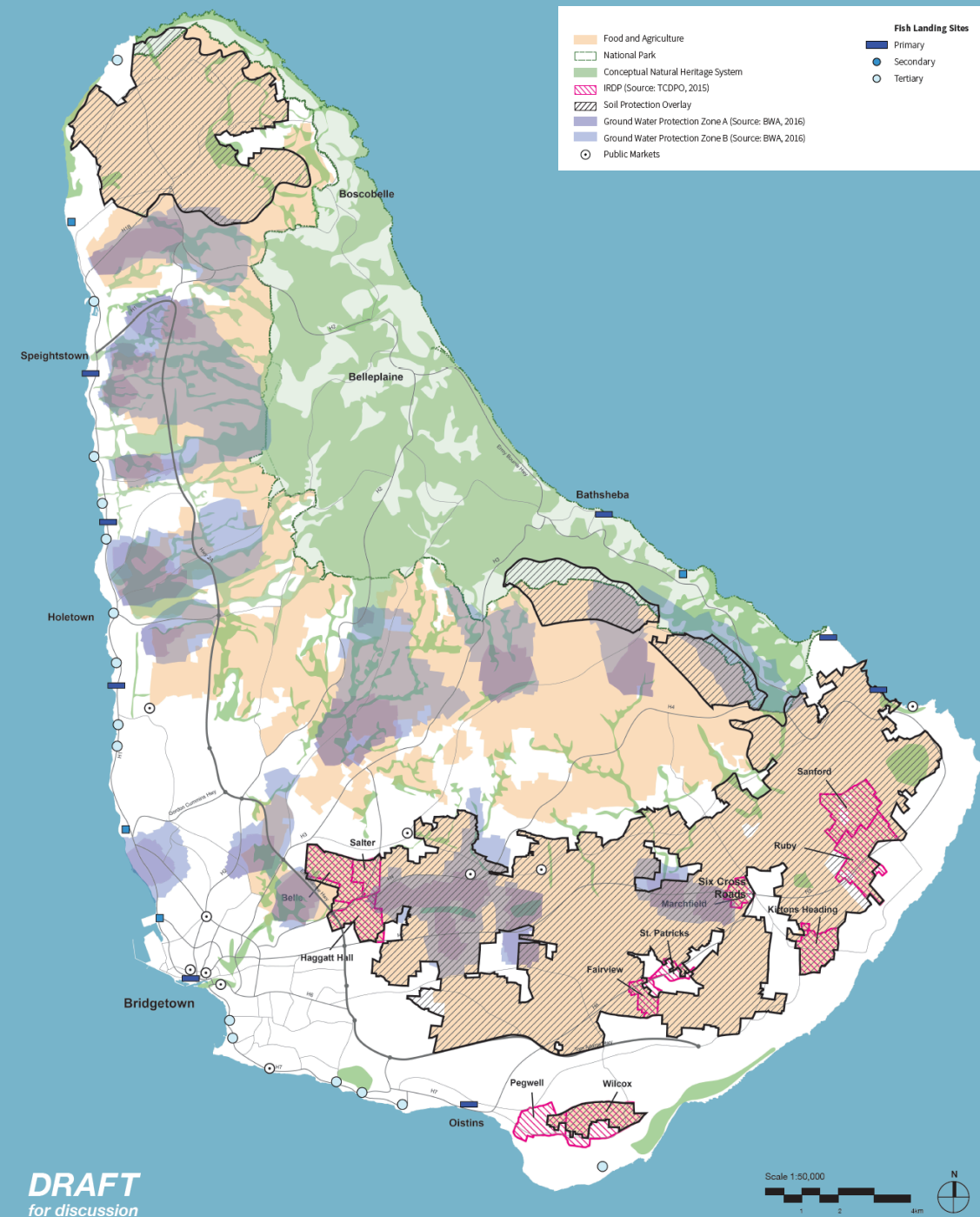




Protecting Core Assets

Food Security and Sovereignty

- Emphasis on Food and Agriculture toward a healthy, resilient, and food sovereign nation
- Promotes viability of the sector
- Defines 4 policy layers:
 - Food and Agriculture Land Use Designation
 - Soil Protection Overlay
 - Integrated Rural Development Area
 - Food Production Zones
- Recommends an Agricultural Census be undertaken
- Introduces Agricultural Impact Assessment tool

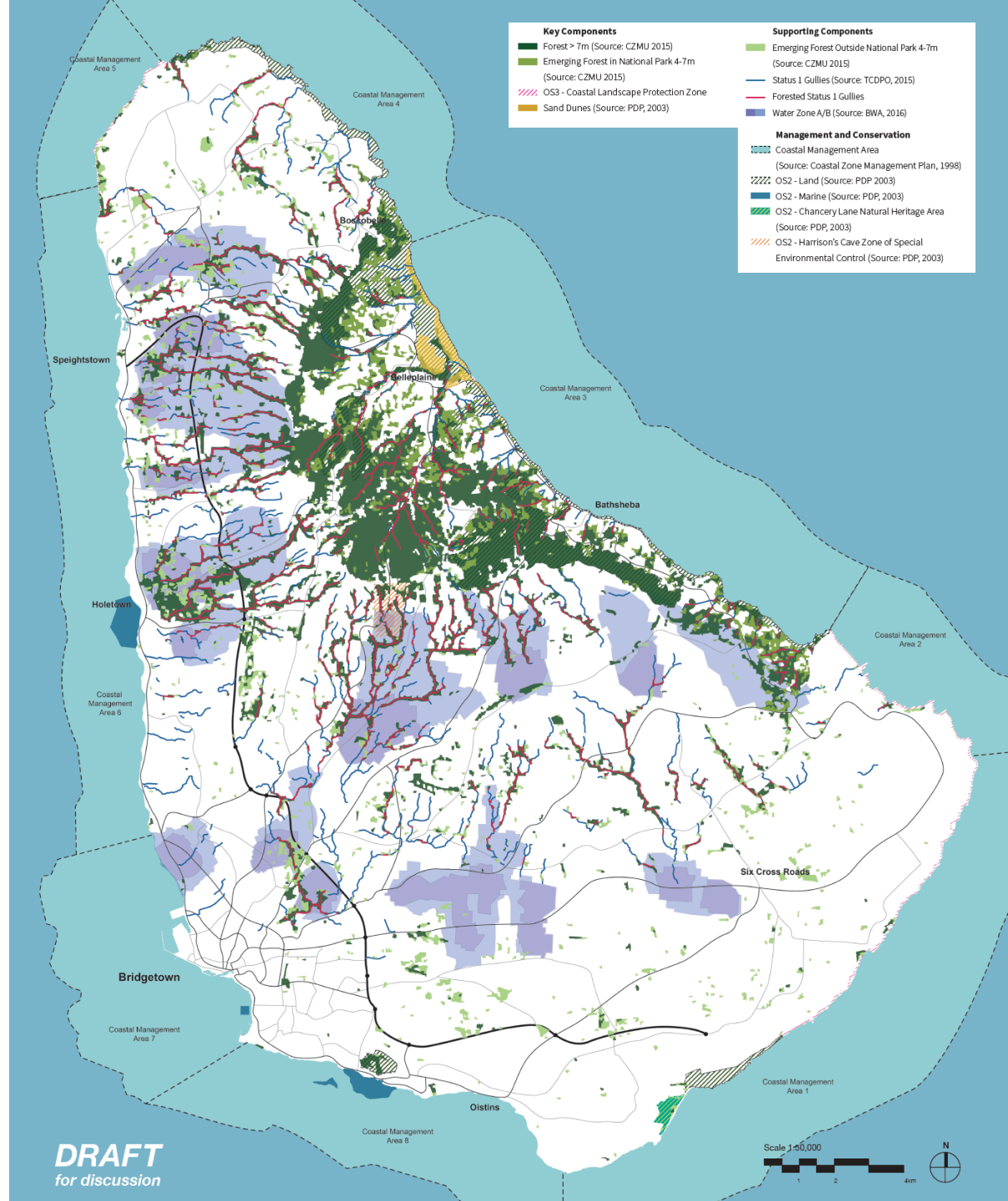




Protecting Core Assets

Conserving the Natural Heritage System

- A focus on Protection and Restoration of the Natural Heritage System and adopts a ‘Ridge to Reef’ approach
- Recognizing the role of the NHS in addressing climate change and disaster risk reduction
- Identified Key Components and Supporting Components as well as:
 - Areas of Management and Conservation
 - Coastal Management Areas
 - Natural Heritage Conservation Areas
 - Harrison's Cave Special Environmental Control





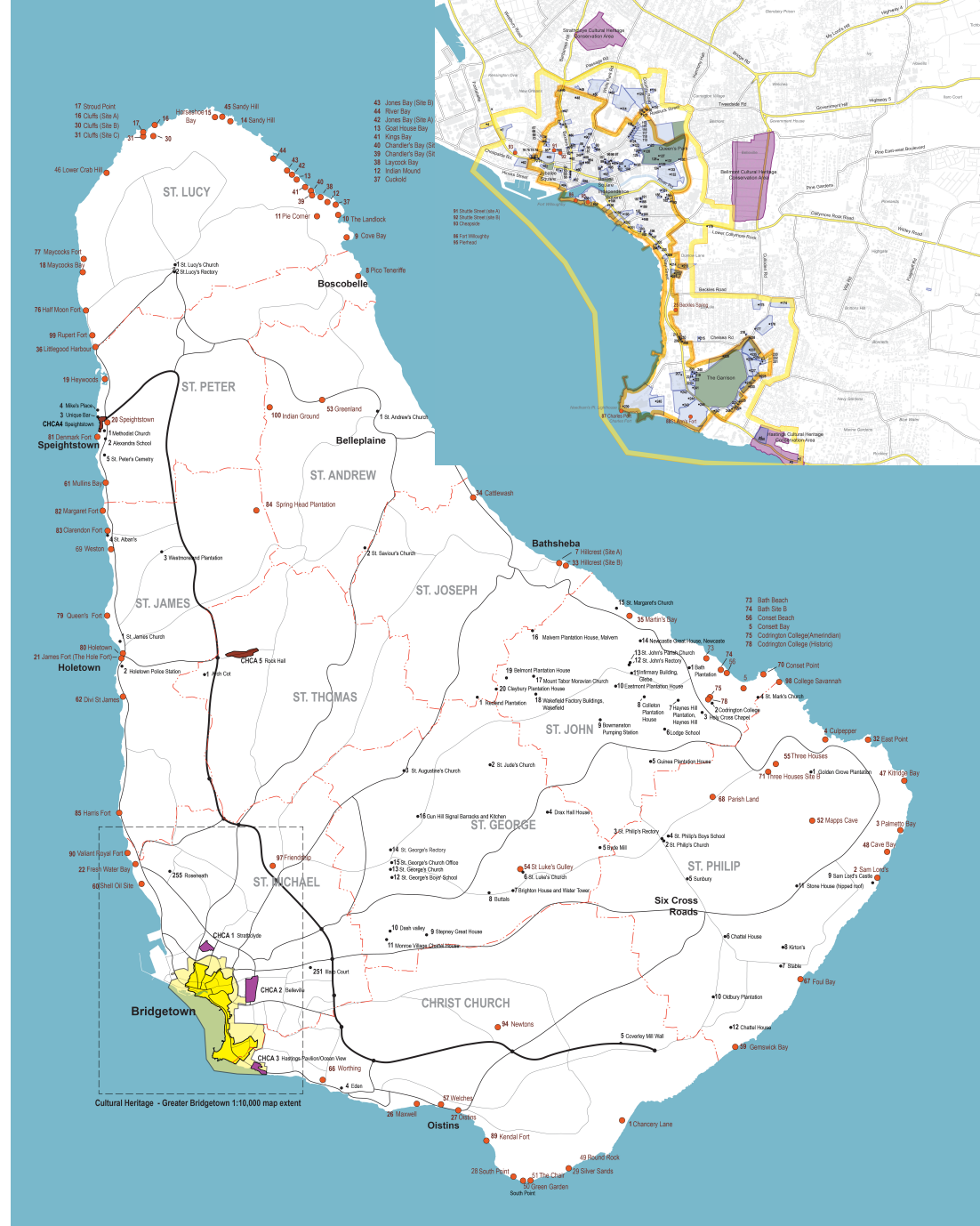
Protecting Core Assets

Celebrating Cultural Heritage

- Updated to reflect and support the UNESCO World Heritage Site and Management Plan for Historic Bridgetown and its Garrison
- Enhances policies to protect and support cultural heritage assets across the island
- Introduces the Barbados Registry of Historic Assets and Heritage Impact Assessments

Legend

- UNESCO World Heritage Conservation Area (Source: TCDPO 2015)
- UNESCO World Heritage Conservation Buffer (Source: TCDPO 2015)
- Cultural Heritage Conservation Areas (Source: TCDPO 2015)
- Listed Buildings (Source: TCDPO 2015, TCDPO 2017)
- Archeological Areas and Monuments (Source: TCDPO 2015, TCDPO 2017)
- Tax Parcels with Listed Buildings
- Historic Urban Parks

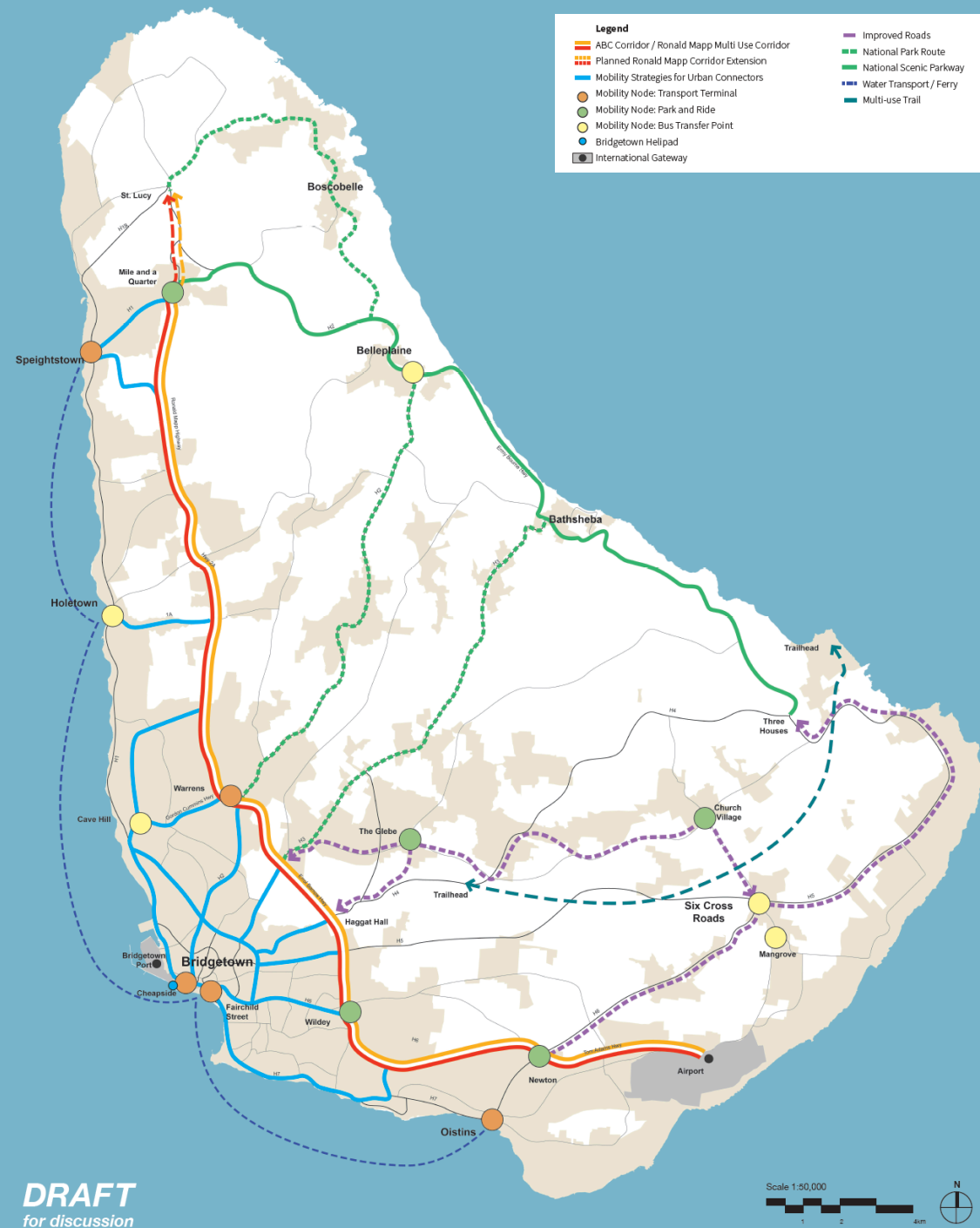


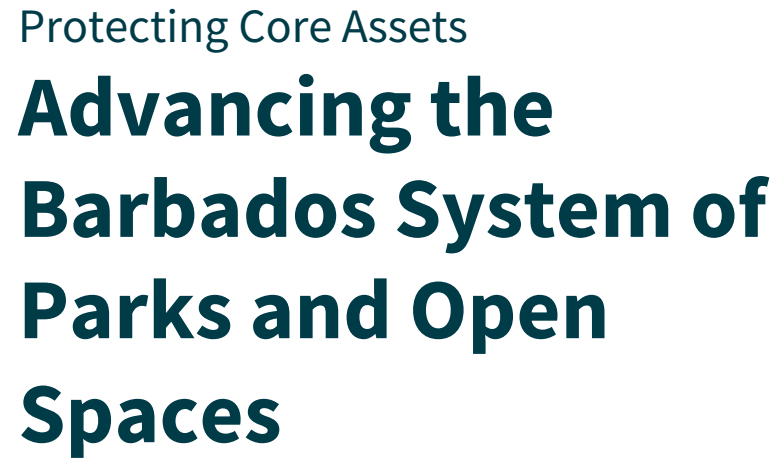


Protecting Core Assets

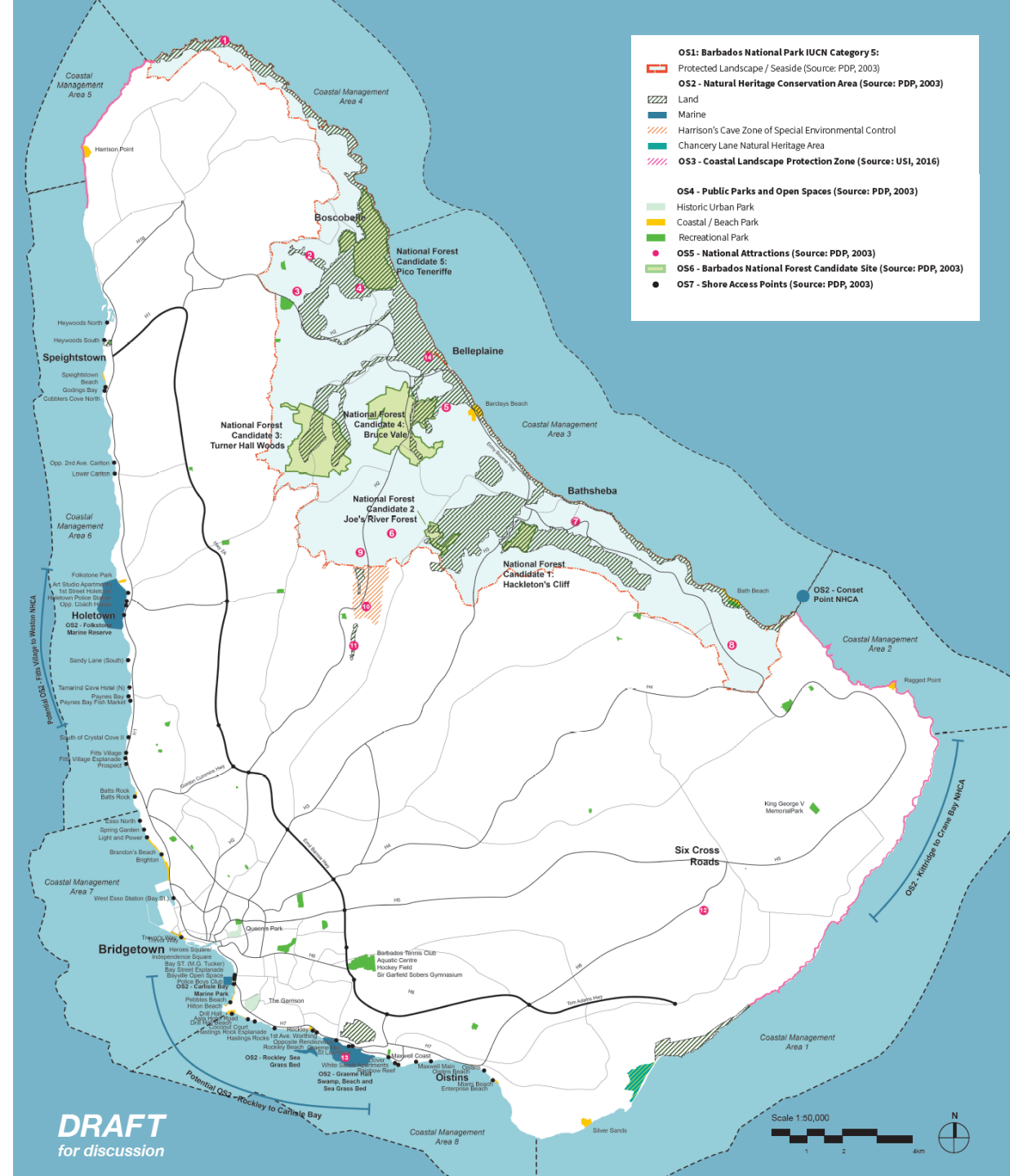
Advancing Mobility and Accessibility

- Introduces “mobility” and “accessibility” as a key concepts
- Promotes integration of land use and transportation decisions and investment
- Defines a multi-modal network:
 - Mobility Nodes
 - Multi-use Corridors
 - Urban Connectors
 - National Scenic Parkway
 - Water Transport
 - International Gateways





OS1	Anchored by the National Park
OS2	Natural Heritage Conservation Areas
OS3	Coastal Landscape Protection Zones
OS4	Public Parks and Open Spaces
OS5	National Attractions – adding Walkers Reserve
OS6	Barbados National Forest Candidate Sites
OS7	Shore Access Points - NEW



Six Cross Roads Community Plan



EXISTING CONDITION

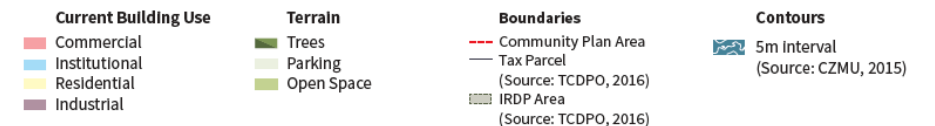
- Significant new residential areas
- Princess Margaret School
- Library
- Post office
- Polyclinic
- Government offices
- Supermarket
- Retail
- Industrial Park
- Multiple bus routes
- Marchfield IRDP



Wynter Crawford Circle



Wayside Vending at Highway 6B





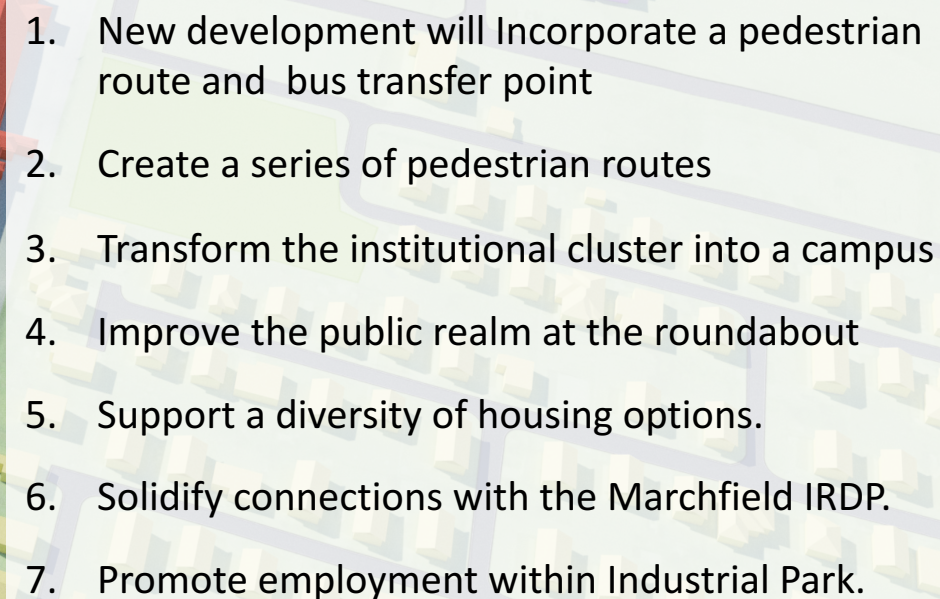
VISION

Six Cross Roads will continue to develop as a **Regional Centre** providing a range of amenities and community uses for the increased population in the southeast portion of the island.

New **development and investment** will focus on **improving the cohesiveness** of the community with greater emphasis on **pedestrian connectivity** and the public realm.

Six Cross Roads will embrace its potential as an inland community that is at **reduced risk from climate change**, and will prioritize maintaining and improving resiliency in its future growth.



- 
1. New development will Incorporate a pedestrian route and bus transfer point
 2. Create a series of pedestrian routes
 3. Transform the institutional cluster into a campus
 4. Improve the public realm at the roundabout
 5. Support a diversity of housing options.
 6. Solidify connections with the Marchfield IRDP.
 7. Promote employment within Industrial Park.

PUBLIC REALM

Six Cross Roads' opportunity sites include:

- A. Civic Campus - redesign as a cohesive public space, public realm improvement, potential for new facilities
- B. South Key Opportunity Site - mixed-use development opportunity, affordable and seniors housing, Bus Transfer Point, incorporation of existing vendors, public open space



Pedestrian Crossing at Highway 6

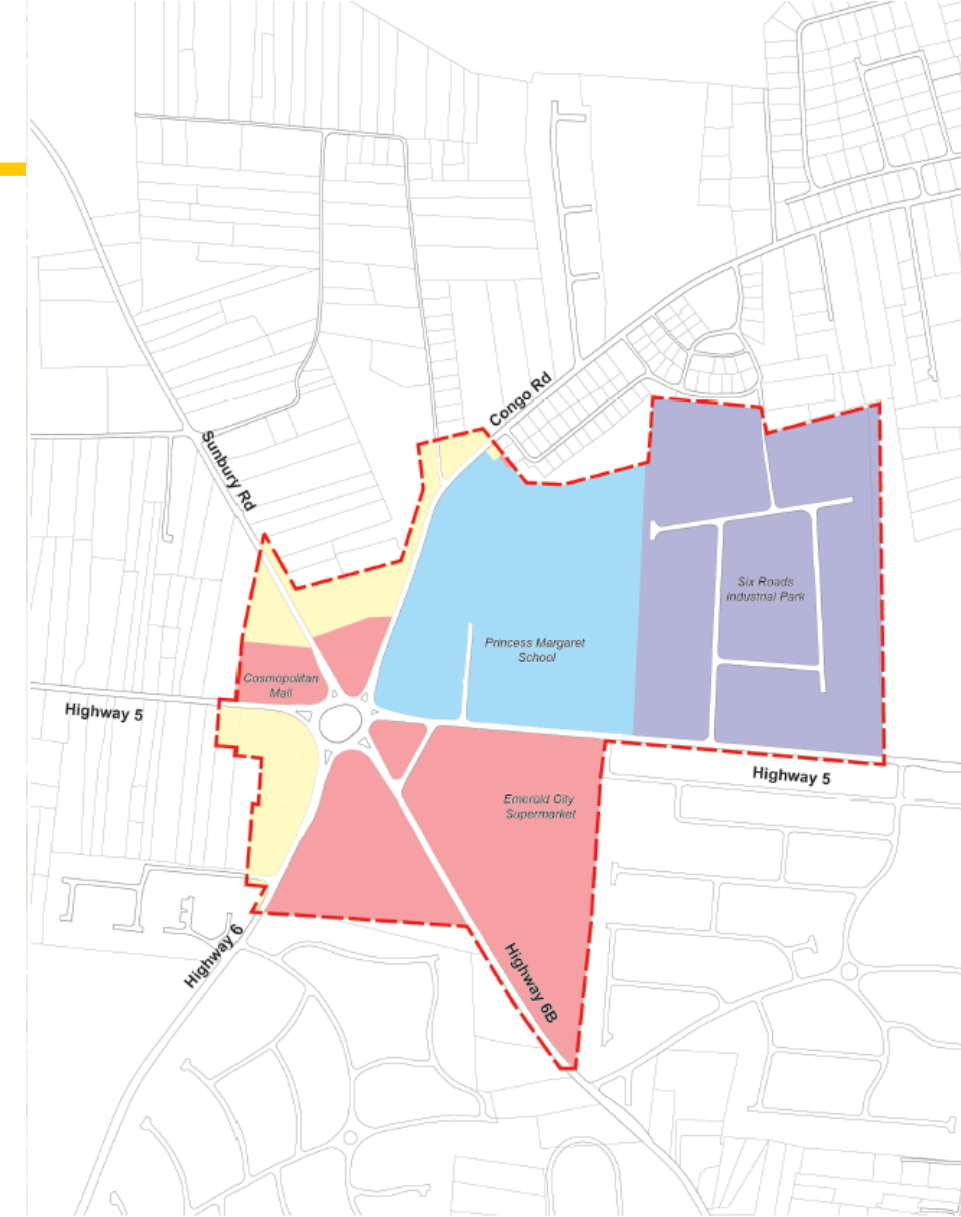


Existing Bus Stop at Highway 6



LAND USE

Six Cross Roads Land Use Policies are intended to guide development in a way that supports the vision and goals of the community.



Land Use

- Mixed Use
- Major institutional
- Predominantly Residential
- Employment

Q+A

What are the key strengths of the Draft PDP Amendment and Six Roads Community Plan?

Where are the areas for refinement?

What is missing/are there gaps?

Engaging the Community

1

SATURDAY, FEBRUARY 25, 2017 | 3:00PM
Princess Margaret Secondary School,
Six Roads, St. Philip

2

MONDAY, FEBRUARY 27, 2017 | 6:00PM
Alexandra School,
Speightstown, St. Peter

3

TUESDAY, FEBRUARY 28, 2017 | 6:00PM
Queen's College, Husbands, St. James

4

FRIDAY, MARCH 03, 2017 | 6:00PM
Queen's Park Steel Shed,
Bridgetown

5

MONDAY, MARCH 06, 2017 | 6:00PM
The Alleyne School, Belleplaine,
St. Andrew

6

SATURDAY MARCH 11, 2017 | 3:00PM
Oistins Bay Gardens, Christ Church

FREE *health checks will be available*

Draft PDP amendment available at: **townplanning.gov.bb/pdp**